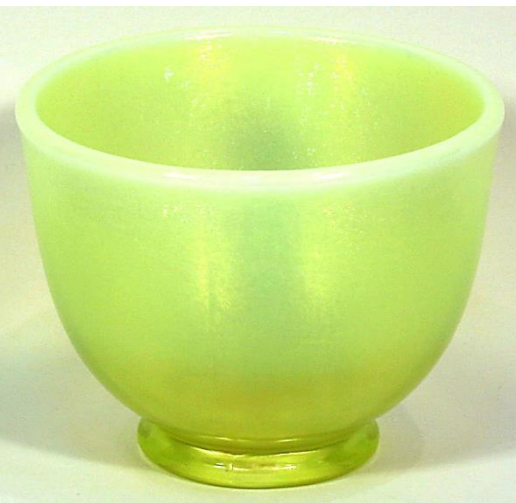


# Contemporary Fenton Stretch Glass

Will be the topic of our ***Stretch Out*** call on Thu, 5/11/17,  
at 8 pm Eastern, 7 Central, 6 Mountain and 5 Pacific Time.

All are welcome to join in by calling  
**415-464-6800**, followed by **ID: 04211974#**.

## Samples and trial pieces made by Fenton in 1975 and 1976



# 1980 - Velva Rose Stretch 75<sup>th</sup> Anniversary June catalog, p. 4

## Velva Rose

First introduced by Fenton in the 20's, this iridescent stretch glass treatment is being brought back this year to help commemorate our 75th anniversary. Some of these patterns were also first made in the 20's while some are either entirely new or adaptations of old patterns.

*Please Note:* This grouping in Velva Rose will be made only in 1980 and each piece will bear the mark



On order blank - page 3, column 3.



7580 VR  
DOLPHIN CANDY BOX

7505 VR  
5 PC. EPERGNE SET

7562 VR  
BELL (STAR CRIMPED)

# 1980 - Velva Rose Stretch

## June catalog, p. 5



# Velva Rose in Fenton Glass Compendium 1970-1985

by John Walk

Velva Rose (Stretch Glass) VR 1980-1982

Velva Rose was a reissue of Fenton's Velva Rose Stretch Glass, originally made in the 1920s. It was first made in 1980 in a select number of items to celebrate Fenton's 75th year of production. Velva Rose items were only produced for one year and then discontinued. However, other items were also produced in 1981 and 1982 without the 75th year logo to fill out the line.

**Items not pictured:**

Basket, 6.5", Butterfly & Berry; 9134; YOP: 1981-82. \$65-75  
Candleholder, Rose; 9270; YOP: 1981-82. \$25-30 each  
Bud Vase, Faberge; 9453; YOP: 1981-82. \$25-30



Back: Basket, 8"; 7536, YOP: 1980, 75th. \$65-75. Bud Vase: 9056, YOP: 1980, 75th. \$25-30. Bell: Star Crimped, 7562, YOP: 1980, 75th. \$35-40.  
Front: Candleholders; 7572, YOP: 1980, 75th. \$20-25 each.



Epergne, five piece; 7504, YOP: 1980, 75th. \$400-450. *Courtesy of Diane & David Ritter.*



Back: Comport, Footed; 7527, YOP: 1980, 75th. \$45-55. Bowl, 6"; 7526, YOP: 1980, 75th. \$35-45. Nut Dish; 7529, YOP: 1980, 75th. \$25-30. Front: Salver; 7516, YOP: 1980, 75th. \$25-35.



Fairy Light; Persian Medallion, three piece, 8408, YOP: 1980, 75th. \$80-100.  
Comport; Persian Medallion, 9422, YOP: 1980, 75th. \$45-55. *Courtesy of Diane & David Ritter.*

# Velva Rose & Velva Blue in Fenton Glass Compendium 1970-1985



After a limited offering of Velva Rose (VR) proved popular in 1980, both Velva Rose and Velva Blue (VB) were in Fenton's 1981-1982 catalog. The Pink Velvet, Blue Velvet and Crystal Velvet items in the bottom row were made later, as noted.

- |  |  |  |
|--|--|--|
| <b>95.</b> 9455 VR 9" handkerchief vase.         | <b>102.</b> 7562 VB star crimped bell.                   | <b>107.</b> Barnyard Buddies (1985) V1774 V3 piglets bell.                         |
| <b>96.</b> 9488 VB candy box.                    | <b>103.</b> 9423 VR 6" Floral bouquet vase.              | <b>Items 108-111 were in the Prayer Children group introduced in January 1984.</b> |
| <b>97.</b> 8405 VR beaded fairy light.           | <b>104.</b> 9422 VB Persian Medallion compo.             | <b>108.</b> Pink Velvet 9662 VP girl bell.   |
| <b>98.</b> 9128 VB Sheffield 7½" shallow bonbon. | <b>105.</b> Barnyard Buddies (1985) V1774 V4 lamb bell.  | <b>109.</b> Blue Velvet 9648 VK boy mug.   |
| <b>99.</b> 9432 VR 11" Panelled basket.          | <b>106.</b> Barnyard Buddies (1985) V1774 V5 goose bell. | <b>110.</b> Pink Velvet 9605 VP girl light.  |
| <b>100.</b> 8250 VR miniature rose bowl.         |  | <b>111.</b> Crystal Velvet 9662 VE girl be   |

# Velva Blue in Fenton Glass Compendium 1970-1985

## Velva Blue (Stretch Glass) VB 1981-1982

Velva Blue was made as a companion color to the 1981-82 issue of Velva Rose. It was a pale ice blue stretch, which was an attempt to recreate a market for the Stretch Glass that Fenton had produced in the 1920s. A beautiful color and treatment, it is seldom seen in today's market.

YOP: ALL 1981-1982

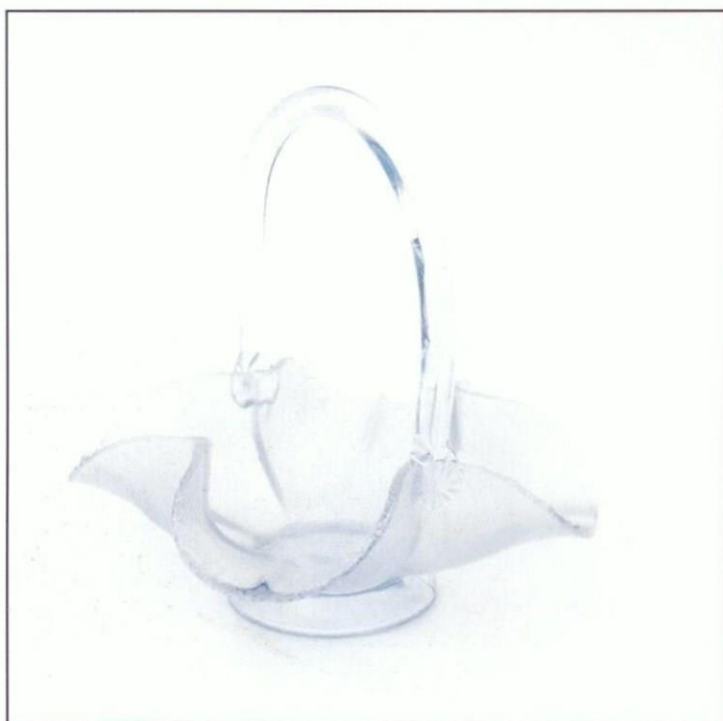
### Items not pictured:

- Butterfly on Stand; 5171. \$45-50
- Bowl, 6.5"; 7526. \$35-45
- Bud Vase; 9056. \$20-25
- Basket, 6.5", Butterfly/Berry; 9134. \$55-65
- Candle Holder, Rose; 9270. \$20-25 each
- Vase, 14", Paneled; 9459. \$45-55

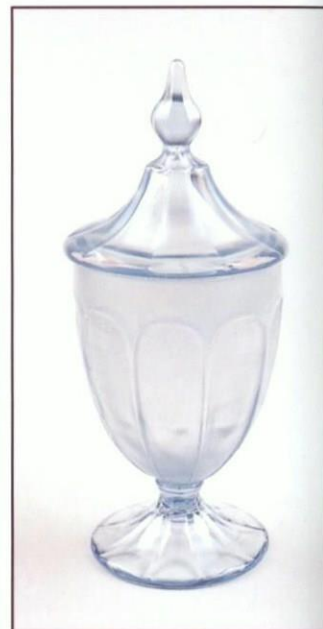


Bowl, Rose, 10"; 9248. \$45-55.  
Bonbon, Shallow, 7"; Sheffield, 9128. \$35-40.

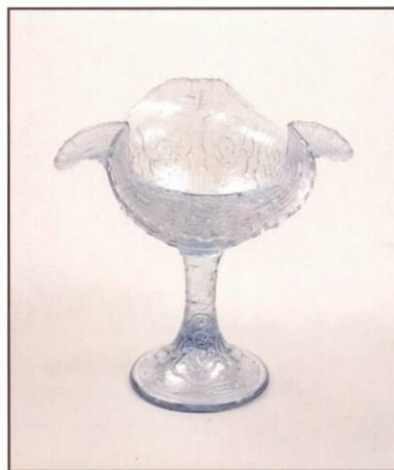
Candy Box; Paneled, 9488. \$75-85. *Courtesy of Chuck Bingham.*



Basket, 8"; 7536. \$55-65.



Comport; Persian Medallion, 9422. \$55-45. *Courtesy of Judy & Chriss Cord.*



Epernge, five piece; 7505. \$400-450. *Courtesy of Sharon & Alan Fenner.*



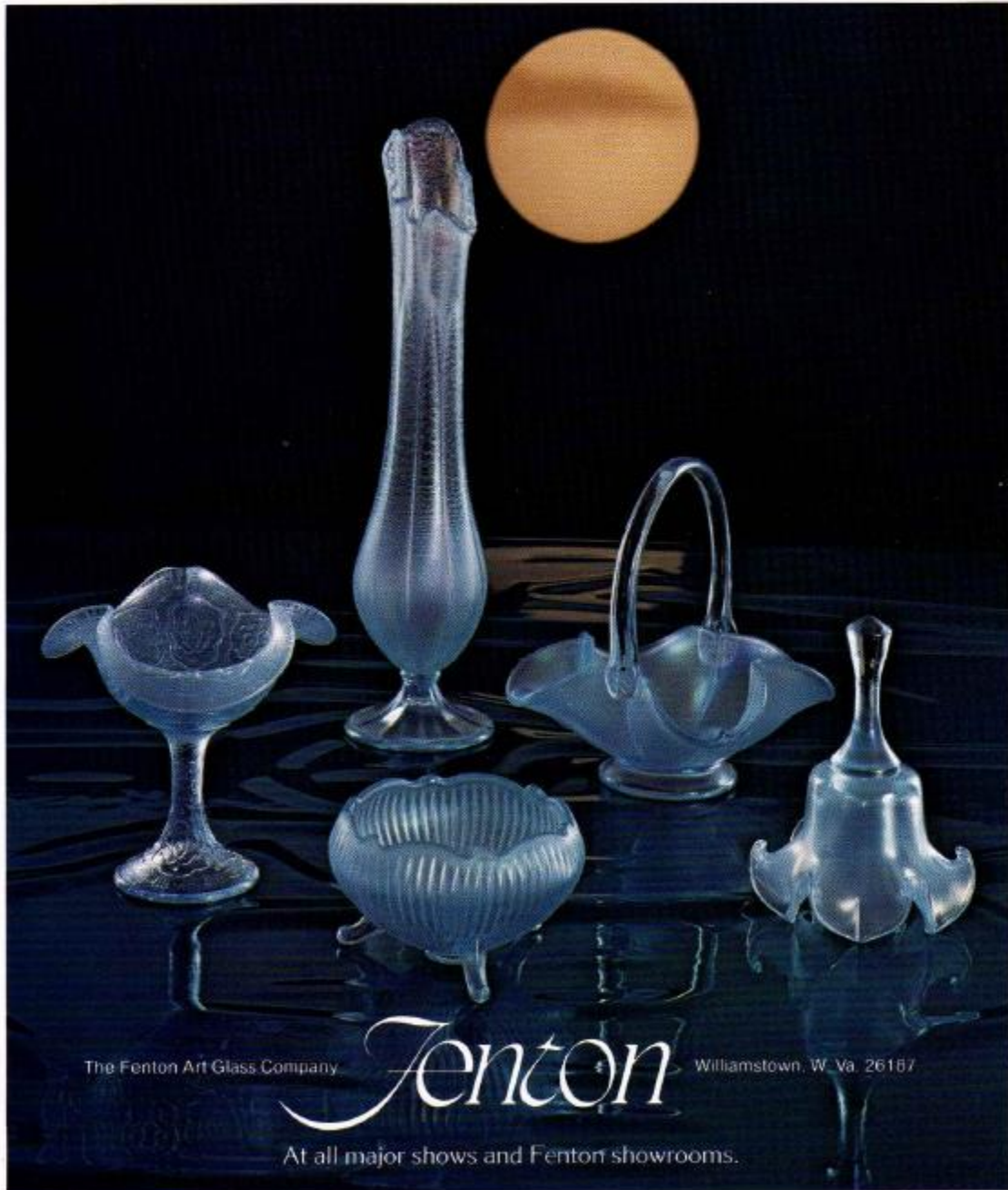
Rose Bowl, Miniature; 8250. \$25-35.



## Moonlight...soft music... beautiful memories captured in Velva Blue.

Inspired by the popularity of 1980's special-issue Velva Rose, the Fenton artists have created this new vision of elegance and romance. Velva Blue is an

iridescent stretch glass treatment, available in these and other pieces of fine art glass from Fenton.



# 1994 - Stiegel Green Stretch June catalog, p. 2

**F E N T O N**  
*1994 Historical Collection*  
**A LIMITED EDITION OFFERING**  
(This color in these moulds will be produced only through November 1994.)

*Stiegel Green Stretch*  
The Stiegel Green color developed in 1933 is combined with the stretch glass treatment so popular from the 1920's. Stretch glass is produced by spraying with metallic salts and carefully reheating to a satin finish. Most pieces are then flared or crimped in some way causing the iridescent skin to "stretch." Nine new items have been added for second half, six of which are handpainted with a beautiful floral called "Wind Flowers". These pieces are handpainted and then have a ground glass sprinkled on the pattern for texture and dimension.

Refer to 1994 Limited Editions Price List to Order.

5562 SS Jug, 8"

5560 SS 5 Pc. Water Set

7601 SS 5 Pc. Epergne Set, 13"

5554 SS Comport, 5 1/2"

5533 SS Vase, Jack in the Pulpit, 7"

5501 SS Goblet, 6 1/2"

9/99 SS Logo, Fenton, 5" w.

5555 SS Basket Hd., 7"

5551 SS Basket Hd., 9"



# 1994 - Stiegel Green Stretch

## June catalog, p. 3

2799 SS  
Box, w/ Lion  
Cover, 5" w.

*Stiegel Green Stretch... an exotic glass treat from the past*

**Family Signature Series**

The Family Signature Series is comprised of a few select pieces that represent the glass worker's and glass decorator's finest work. Dated 1994, the two special pieces at right will be inscribed for a limited time with the signature of a second generation member of the Fenton Family.

7787 ST  
Basket, 8"  
Handpainted  
Stiegel Green  
Stretch,  
(Inscribed with  
signature of  
Bill Featon,  
Chairman  
of the  
Board.)

1568 CW  
Pitcher, 5 1/2"  
Handpainted  
Cranberry  
(Inscribed with  
the signature of  
Frank M. Fenton,  
past President  
and Chairman of  
the Board.)

Save 30%  
0739 AS  
10 1/2" "New"  
Stiegel Green  
Stretch  
Assortment  
(Refer to order  
blank for make-  
up.)

4602 SS  
Urn w/ Cover,  
12"

2773 SS  
Bowl, Open Edge, 8"

4302 SS  
Epergne, 2 Pc  
Diamond Lace

4381 ST  
Candy w/ Cover,  
5 1/2"

3008 ST  
Vase, Handkerchief,  
8"

2739 ST  
Rose Bowl, 3 1/2"

9667 ST  
Bell, Aurora, 7"

5826 SS  
Candlesticks,  
4"

5259 ST  
Sparrow, 5"

# 1994 - Stiegel Green Stretch Historical Collection catalog

*Stiegel Green Stretch*

The Stiegel Green color developed in 1953 is combined for the first time with the stretch glass treatment so popular from the 1920's. Stretch glass is produced by spraying with metallic salts and carefully reheating to a satin finish. Most pieces are then flared or crimped in some way causing the iridescent skin to "stretch."

Stiegel Green Stretch... an exotic glass treatment from the past.

Refer to Limited Editions 1994 price list to order.

**FENTON**

1994 Historical Collection

A LIMITED EDITION OFFERING

Color to be offered through 1994--on June 1, 1994, offering to be "freshened" for June-November, 94 selling.

Size 5 1/2" - 0559 AS

12 Pc Stiegel Green Stretch Assortment

Includes \* each of all 12 items.

5551 SS  
Basket, 7 1/2", 9"

7601 SS  
5 Pc. Epergne Set,  
13"

5562 SS  
Jug, 8"

5560 SS  
5 Pc. Water  
Set

5561 SS  
Coble, 6 1/2"

5555 SS  
Basket, 7 1/2", 7"

5572 SS  
Bowl, 12"

5504 SS  
Comport, 5 1/2"

5553 SS  
Vase,  
Jack is the  
Pulpr, 7"

5526 SS  
Candlesticks,  
4"

2759 SS  
Rosa Bowl,  
3 1/2"

5559 SS  
Vase,  
Handkerchief,  
8"

9657 SS  
Bell, Aurora,  
7"

5799 SS  
Logo, Fenton,  
5 1/4"

# 1995- Celeste Blue Stretch 90<sup>th</sup> Anniversary Collection catalog (also all items together on page 1 of the 1995 January catalog)

**FENTON**  
90<sup>th</sup> Anniversary  
Collection

*Celeste Blue Stretch*  
Celeste Blue celebrates 90 years of quality craftsmanship. This exciting color was first developed in 1921 and has not been offered in the Fenton line since the mid-20's

2590 KA  
Centerpiece  
with Nymph,  
4 Pc., 9 1/2"  
(\$95.00)

*Centerpiece Brought on Stand with September Morn Nymph*  
First used as a set with these three moulds in the early 1930's. The September Morn Nymph is patterned after a figure in a painting by the same name. Painted by Paul Chabas in 1912, it now stands in the Metropolitan Museum of Art. It first appeared in the Fenton line in 1928 as a decorative centerpiece.

2767 JE  
Vase, 4 1/2"  
(\$32.50)

1134 KA  
Compot, 5 1/4"  
(\$32.50)

1137 JE  
Top Hat, 4 1/4"  
(\$49.50)

1136 JE  
Vase, Fan, 6"  
(\$49.50)

9488 KA  
Candy Box w/  
Cover, 13 1/2"  
(\$49.50)

1112 JE  
Basket, Footed,  
7"  
(\$27.50)

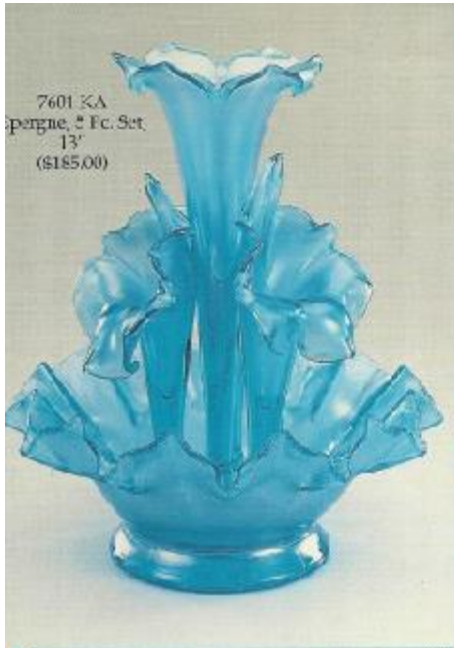
2911 KA  
Candlesticks, 3"  
(\$49.50 pr.)

Two metallic sprays and two extra re-heating steps are required to develop Celeste Blue's textured surface. After reheating and spraying, it is reheated again and the final shape is changed by the Finisher to stretch the metallic surface into sparkling fissures to give us the "stretch treatment."

The Finisher forms the piece to its final shape using a cherry wood paddle or age old tools called "Pucellas."

All prices are suggested retail

# 1995- Celeste Blue Stretch 90<sup>th</sup> Anniversary Collection catalog



7601 KA  
Epergne, 5 Pc. Set  
13"  
(\$185.00)

*The Basket Handler*  
Great skill is required of the craftsmen who put handles on baskets. In very fast order, the handler attaches a glowing ribbon of glass to a piece, forms a loop and attaches the other end. He then works the glass into a graceful arch. This whole process must be done in about 30 seconds before it becomes unmovably chilled.



Each Fenton basket bears an individual "handler's mark". The handler attaches the handle with a stamp engraved with his personal mark. The design of the mark is his alone. Thus, each Fenton basket is personally signed and can always be traced back to the craftsman who created it.



9049 KA  
Tumbler,  
Lined, Lvt.  
4 1/2"  
(\$19.50)

9001 KA  
Water Set, Lincoln  
Inn, 5 Pc. Set, 7"  
(\$135.00)

*The Epergne*  
This epergne was first offered by Fenton in 1986 and was reproduced to look like the epergnes made in the 19th century.



1140 JL  
Vase w/ Cobalt  
Base, 7 1/2"  
(\$59.50)

1135 JE  
Family  
Signature  
Basket,  
Diamond,  
9 1/2"  
(\$75.00)

This basket is limited to sales to the Fenton dealer through 4/30/95.

9667 JE  
Bell, Aurora, 7"  
(\$35.00)

*Family Signature Basket*  
This special basket is inscribed with the signatures of two second generation family members, Bill Fenton (Chairman of the Board and Past President) and Frank M. Fenton (Past Chairman and President).

The mold for this basket was made circa 1925 as a Candy Box and Vase, but has never been made into a basket. The diamond interior is actually a series of small pyramids, chipped into the mold by hand.

*Blue Tinted*  
This handpainted decoration was created by Martha Reynolds to capture the artistic spirit of the 1920's. The raised "Coralene" texture is achieved with ground up glass and adds texture and dimension to the piece. Each handpainted piece is signed by the decorating artist.

# 2002 – Sunset Stretch January catalog, page 5

## Sunset Stretch

The ever changing hues of sunset . . . from peachy-pink and orange blush to the beige-gold or "willight" . . . all captured forever. Like a sunset, the shades vary and each handcrafted piece is unique. A similar color was first introduced in the mid 1920's as a stretch glass treatment. A special blend of metallic salts is saturated on the hot glass before the piece is reformed and flared to its final shape. As the finisher flares the glass, it stretches the metal coating, resulting in the captivating "stretch" look.



7513 S6  
Dolphin Compote, 5 1/2"  
Inscribed with the  
Signature of  
George Fenton



7705 S6  
Cupped Bowl  
w/ Base, 6"



7379 S6  
Basket,  
Footed  
Diamond  
Optic, 9"



7680 SX  
Candy Box w/  
Cover, Paneled  
Frame, 8"



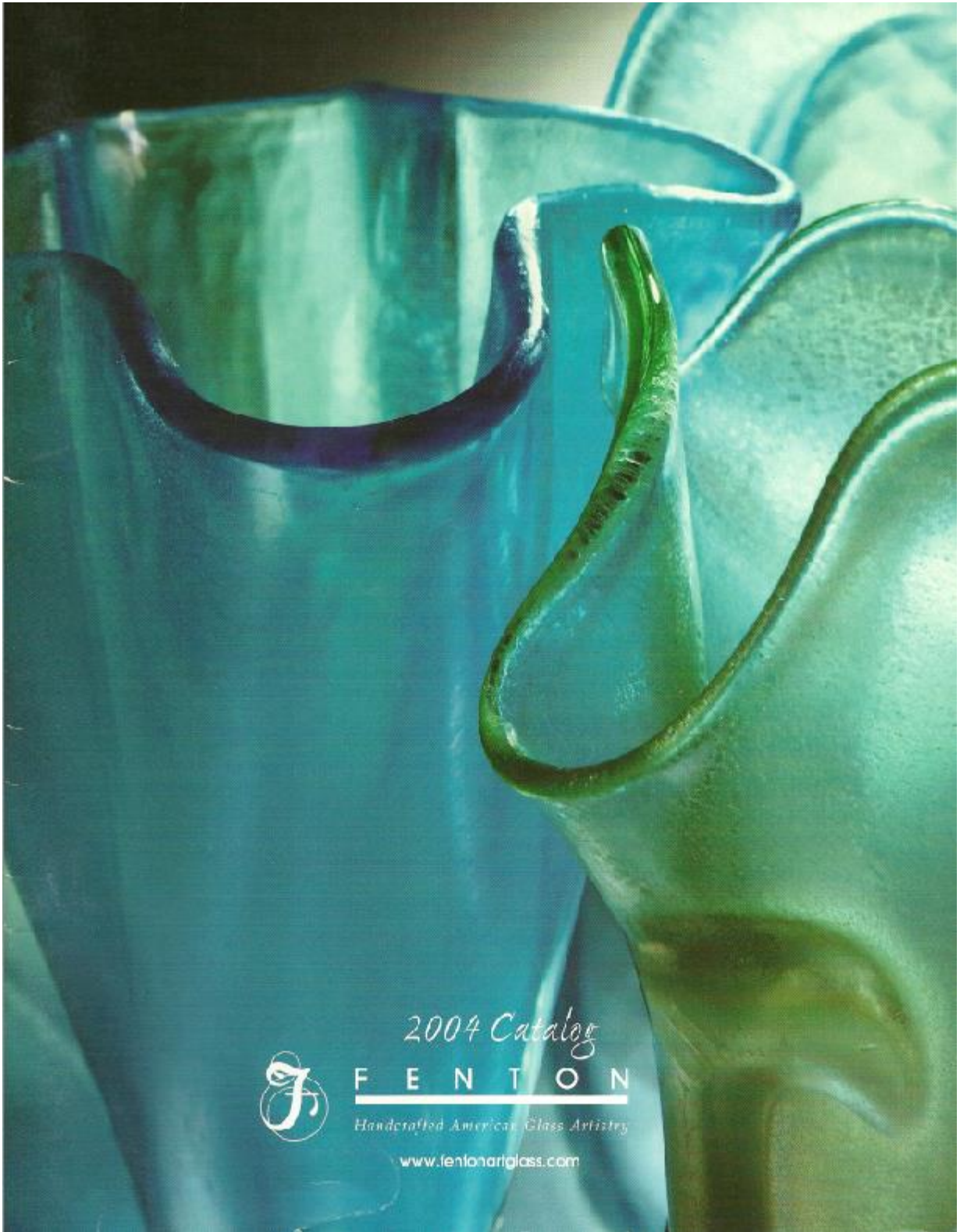
4601 SW  
14 Pc. Punch  
Bowl Set,  
Paneled  
Graps, 9 1/2" h. x 13 1/2" w.  
Includes punch  
bowl, base and  
12 punch cups

5158 S6  
Elephant,  
4"



4642 SX  
Punch Cup, 2 1/2"  
(12)

# January 2004 Catalog Cover



# 2004 – Celeste Blue Stretch

## January catalog, page 10

*Celeste Blue Stretch*

Crisp white daisies float on a sky of Celeste Blue in Stacy Williams' "Dancing Daisies" design. Accents of bright spring green allow these pieces to harmonize perfectly with our Green Apote color statement.

0042 AS  
14 Pc. Celeste Blue Stretch  
Assortment

5551 KP  
Vase, Cheneef, 8 1/2"

1168 KP  
Vase, Footed, 6"

5530 KP  
Basket, 7"

*Fenton Notes*

**The Art of Celeste Blue Glass**

First made in the 1920s, this color takes its name from the Italian celeste (pronounced "day-ess-tay"), which means "celestial, divine or heavenly." We couldn't agree more! The splendid opalescent iridescence is a real tribute to the artisans who labored at Fenton some eighty years ago when this glass was first produced.

5430 KP  
Basket, 8"

5960 KP  
Candy Box, 6"

9144 KJ  
Ringholder, 3"

5065 KP  
Cat, 5"

# 2004 – Celeste Blue Stretch

## January catalog, page 11

— *Fenton Notes* —

**The Art of Stretch Glass**

*During the manufacturing process, these items are sprayed with a mixture of metallic salts before being reheated and brought to their final shape by a skilled glassworker called a Finisher. This finishing procedure often creates a myriad of striations and even a somewhat rough texture in the iridescent surface, particularly at the edges of the piece.*

5951 K9  
Vase, Cloverleaf  
3½"

5297 K4  
Slipper, Cat, 6" l.

0500 KA  
Bel, Drapery  
8"

4585 KJ  
Basket, Paneled Grape  
4½"

5066 KJ  
Hummingbird  
2½"

9596 K4  
Votive, Two-way  
4½"

7108 10  
Box, Paneled, 6"

5038 K4  
Elephant, Baby  
3½"

1158 KA  
Vase, Footed  
8"

2758 K4  
Horse Bowl, 3½"

5290 JH  
Slipper, Cat, 6" l.

5430 KA  
Basket, 8"

**FENTON**  
Manufactured in the USA  
www.fentonartglass.com



# 2004 – Green Apple Stretch

## January catalog, page 12

13

*Green Apple Stretch*

0043 AS  
15 Pc. Green  
Apple  
Stretch  
Assortment

2753 JP  
Vase, Handkerchief  
10"

5937 JP  
Basket,  
Paneled  
10"

2077 JH  
Votive, Drapery,  
Two-way, 4 1/2"

5366 JD  
Hummingbird, 4 1/2"

2835 JP  
Basket, Wildflower  
7"

9144 JP  
Ringholder, 3"

5156 JH  
Cat, 3 1/2"

2759 JH  
Rose Bowl, 3 1/2"

5965 JP  
Ball Priscilla  
4 1/2"

7327 JQ  
Rose Bowl, 5 1/2"

5507 JQ  
Basket, Paneled  
10"

5220 JQ  
Pig, 3"

540E JQ  
Fairy Light, 5"

7108 JQ  
Box, Paneled  
6"

5250 JH  
Slipper, Cat, 6" l.

Inspired by Florentine Green from the 1920s, this fresh new color blends perfectly with the lively color now popular in home décor. A delicate "Pansy Morning" design by Stacy Williams enhances the sparkling Green Apple color—simply delightful when paired with Celeste Blue Stretch or pair with Rose Milk for a trendy retro look.